

# What made our Long Term Recovery Committee reconvene...

Marshall County, Iowa

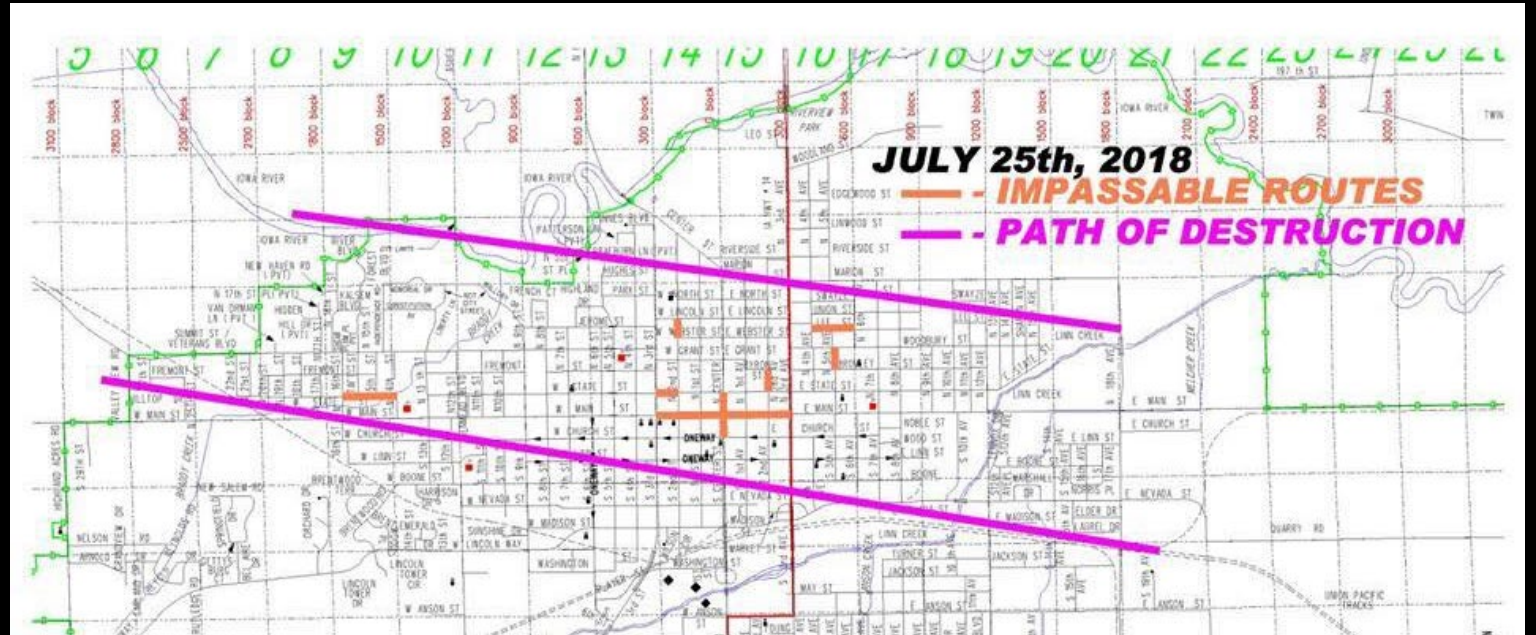
LTR Committee established January 2013  
Had not been meeting regularly in years

Special thanks to Brian Krumm, Marshall  
County CERT for pictures in this PowerPoint



July 19, 2018  
Hit 16:40 HRS  
144 MPH – EF3

Marshalltown Tornado



Tornado Path

## Tornado 1 - Marshalltown

Marshall County

Date

July 19, 2018

Time (Local CDT)

4:24 p.m. - 4:47  
p.m.

EF Rating

EF-3

Est. Peak Winds

144 mph

Path Length

8.93 miles

Max Width

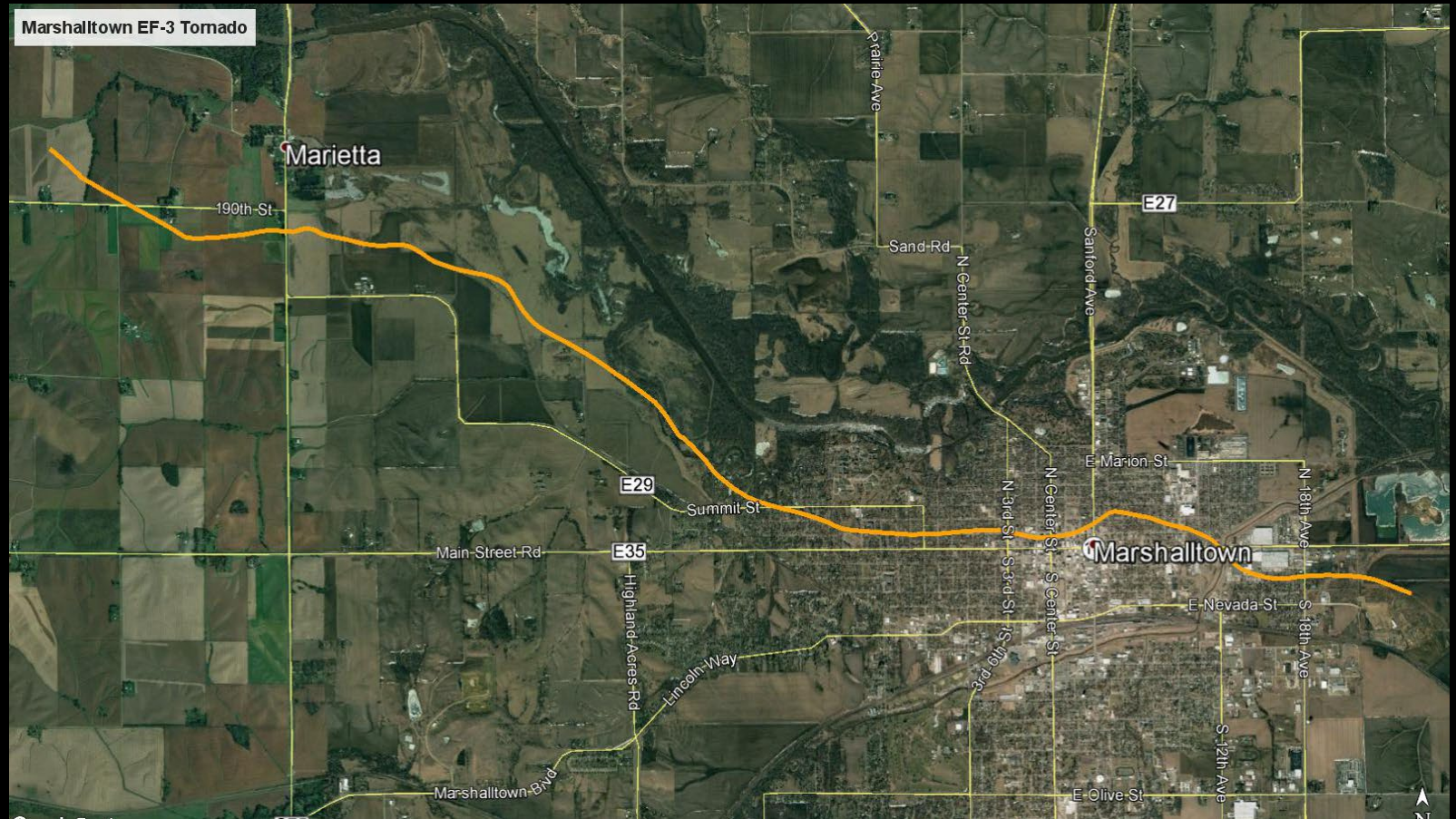
1200 yards

Injuries/Deaths

22/0

### Summary:

This tornado developed northwest of Marshalltown near the little hamlet of Marietta. The tornado traveled southeast on the western side of the Iowa River producing extensive crop and tree damage. The tornado strengthened quickly and took on a wedge appearance as it entered northwest Marshalltown. The tornado tracked more easterly as it entered town producing widespread EF1 and EF2 damage. The tornado went directly through the business district of Marshalltown with EF2 and EF3 damage to many structures including the county courthouse which lost the spire off the clock tower. The tornado continued east through housing areas before encountering the Lennox plant on the east side of town, producing EF3 damage once again. The tornado began to weaken rapidly after this point and dissipated east of the power plant. The tornado produced a total of 22 injuries.



# Tornados Stats & Path



July 20, 2018



# Center & State Streets



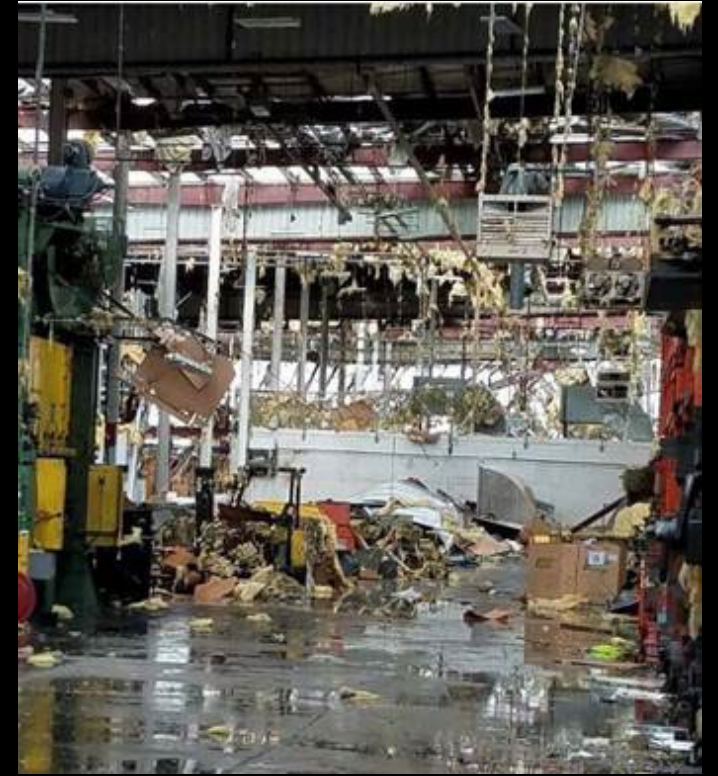
# Lennox Industries





Lennox Industries

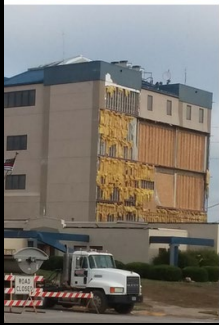
# Lennox Industries





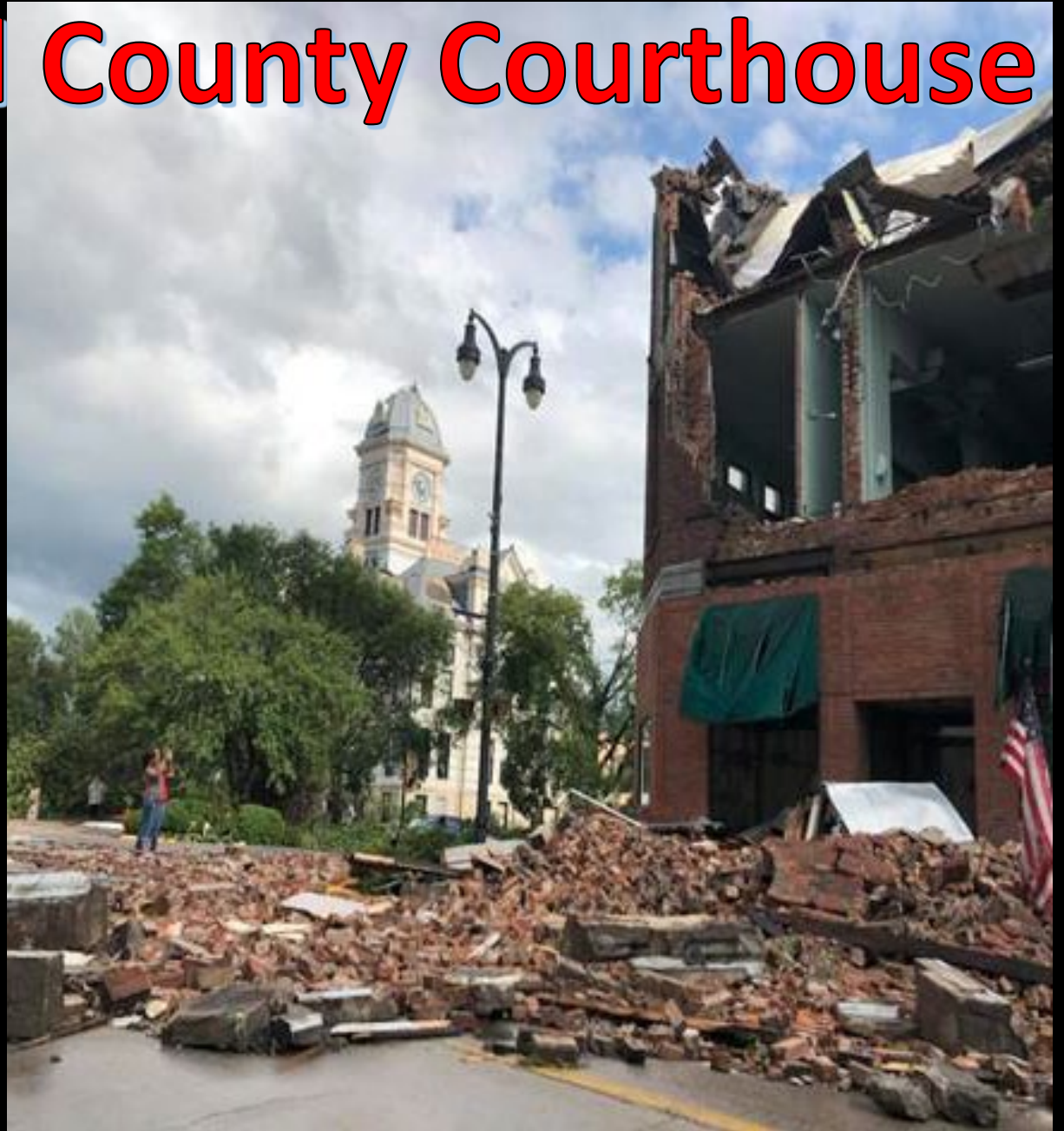
Damage

# RACOM Corporation



**PROGRESS!!**  
BACK TO WORK AS USUAL  
THIS MONDAY!  
[#RacomStrong](#)

# Marshall County Courthouse





# Marshall County Courthouse



**Downtown**



**West Main Street**



**North 3<sup>rd</sup> Ave Casey's**











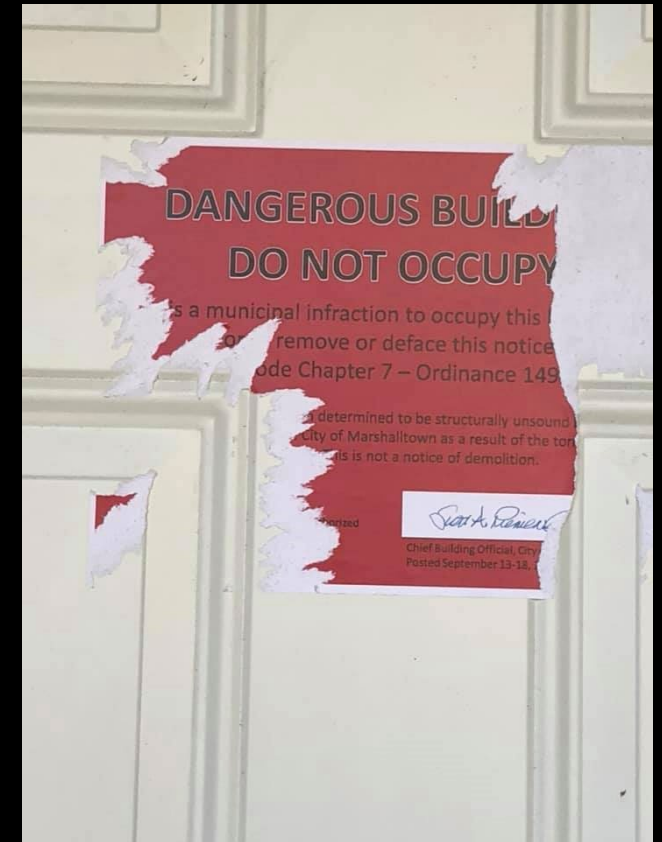
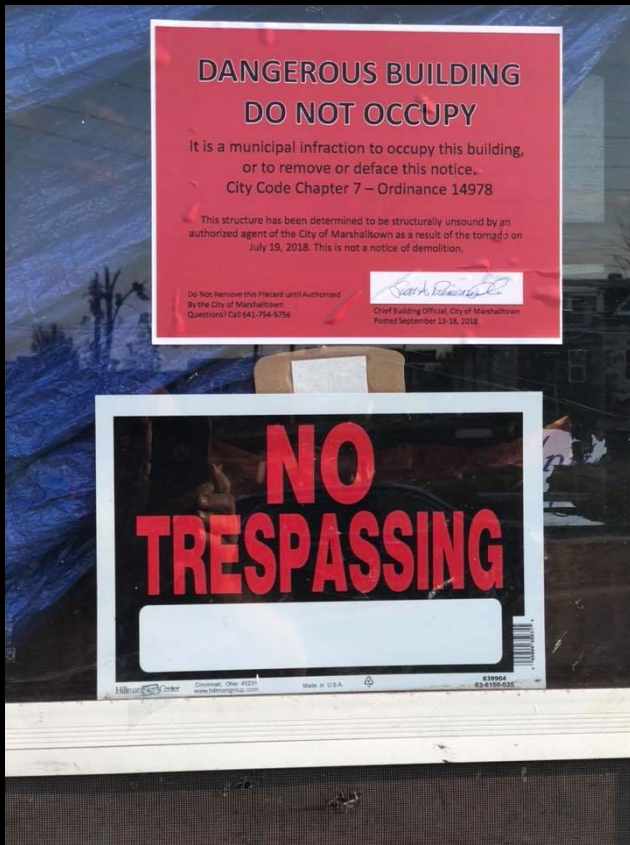
Widespread Damage

# *Helper Auto Service*





We will recover and be better than ever!



# Dangerous Buildings – Post Tornado

---

**Recovery**

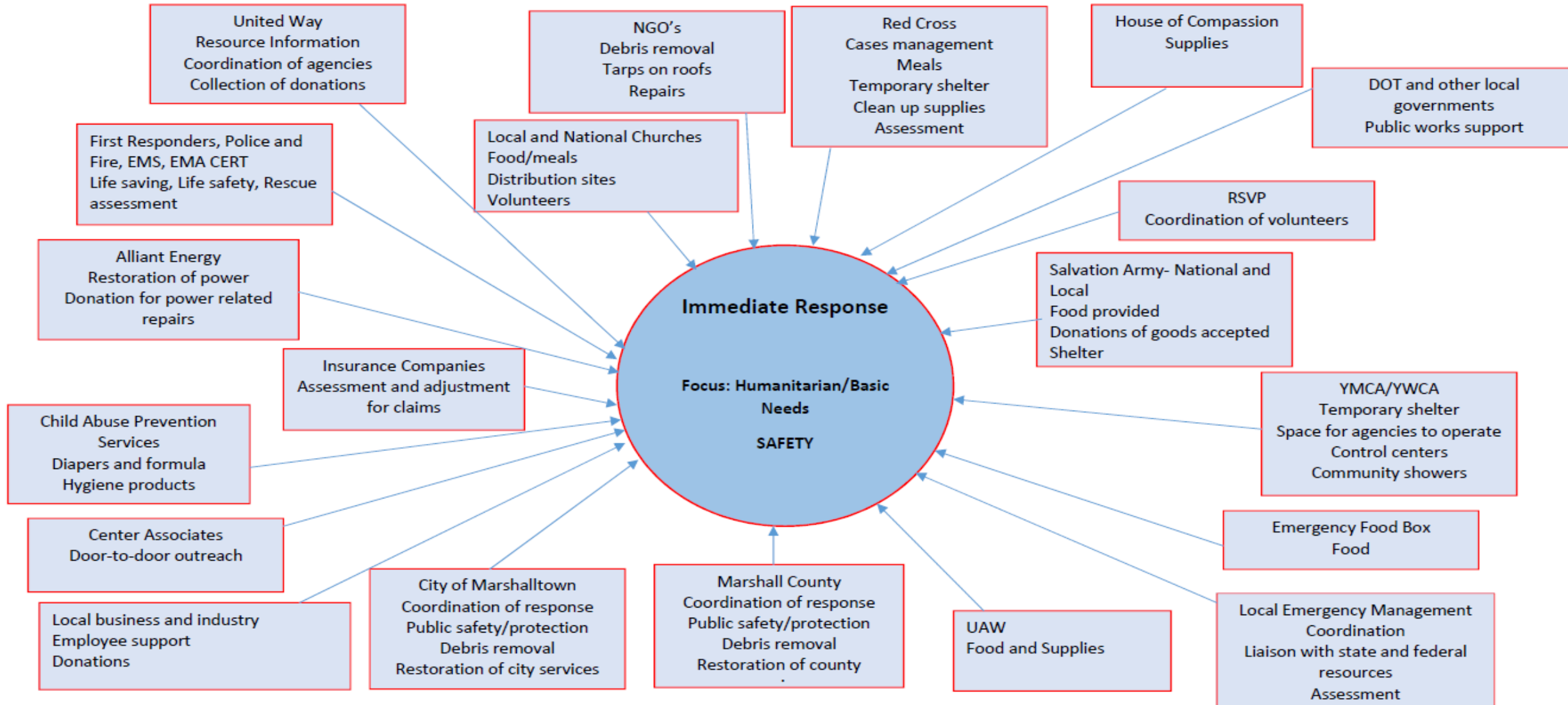
**Marshalltown**

**Strong**



# Phase One

Day 1 through approximately day 10



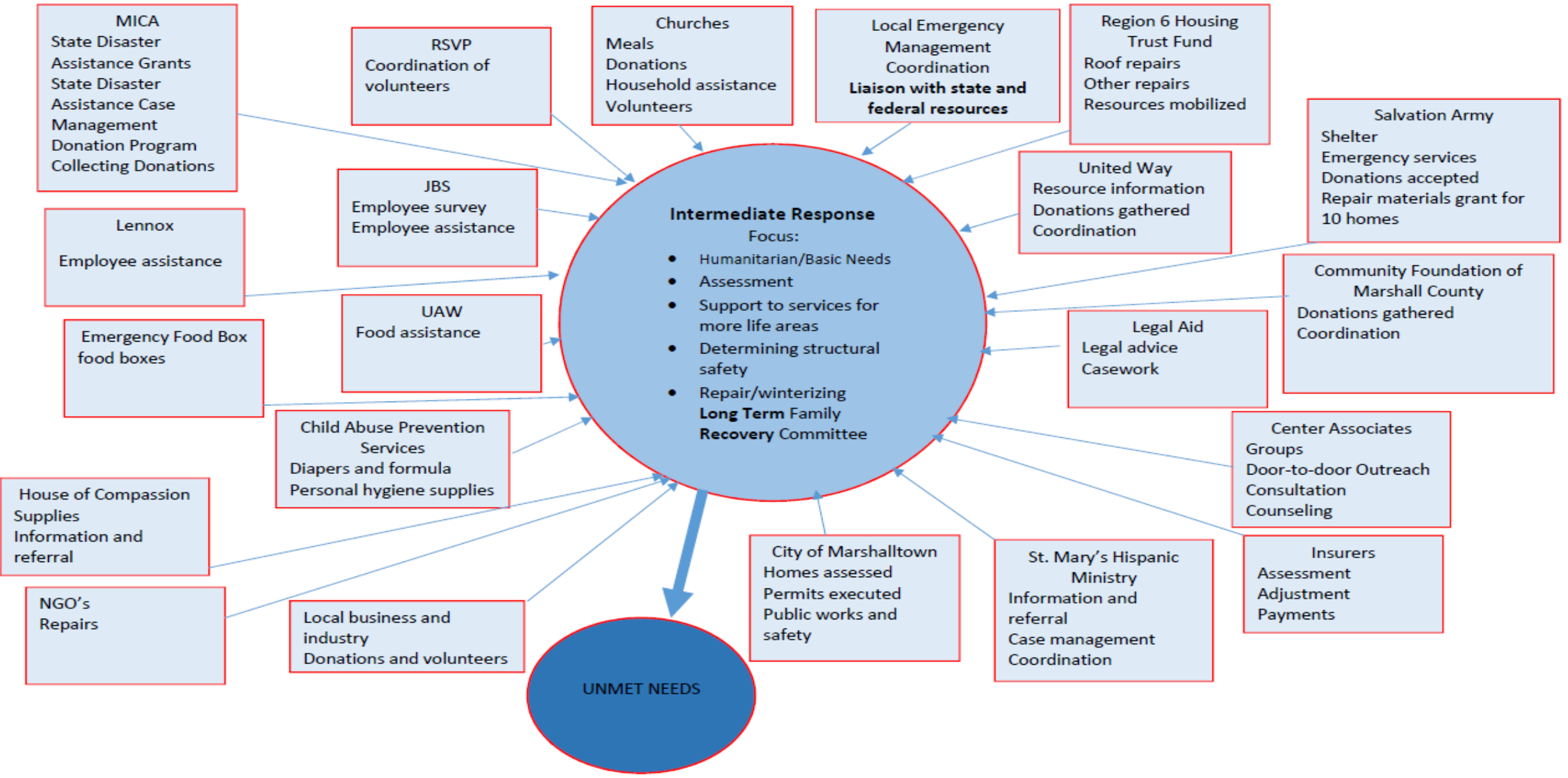
## Marshalltown Long Term Family Recovery Structure

**Steering Committee**  
**Three Co-Chairs, 16 Subgroup chairs, 6 At Large members**

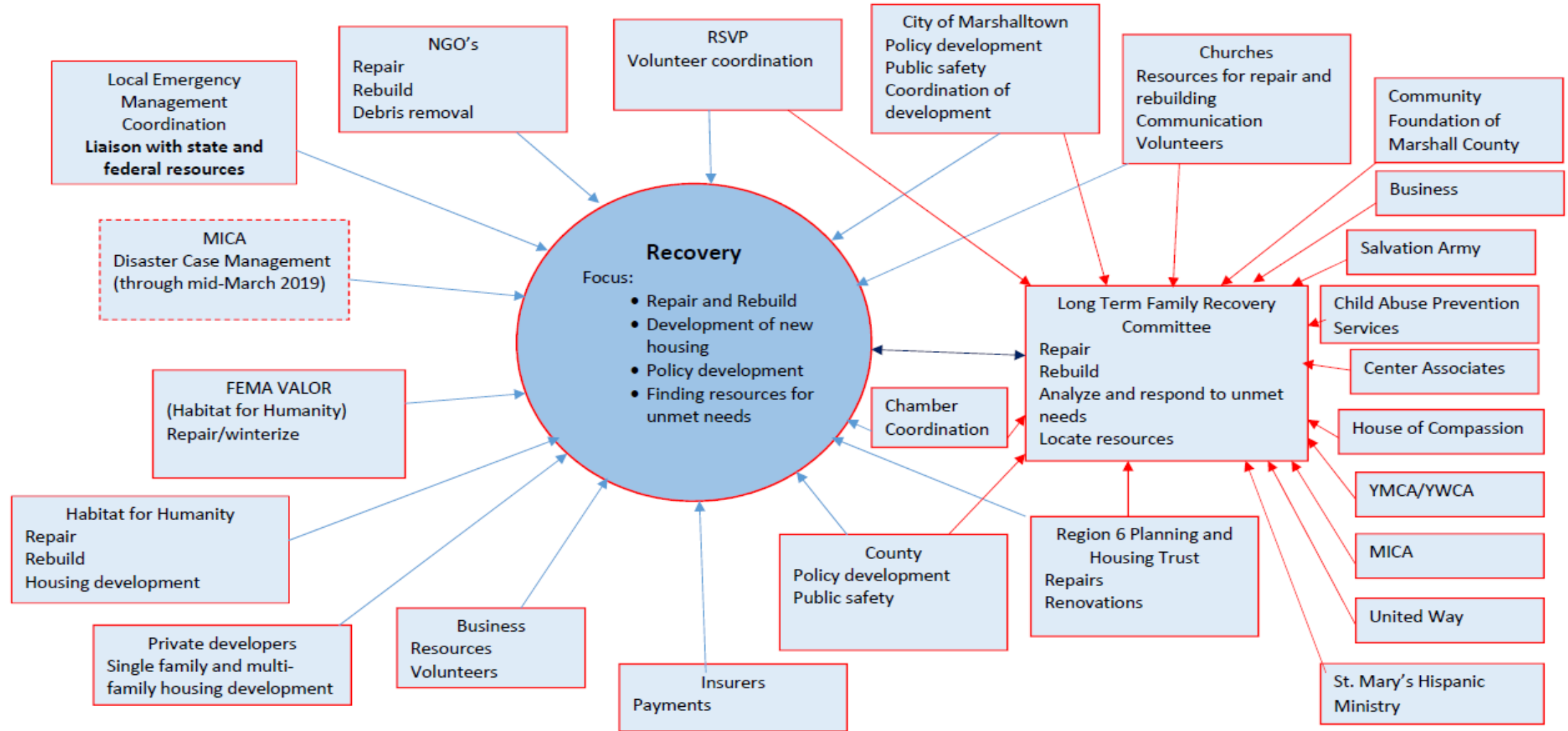
| Data Management   | Case Advocacy & Management  | Volunteer Management  | Communication, Information & Technology   | Finance-Donations & In-Kind  | Housing & Building   | Spiritual, Emotional & Mental Health  | Community Assessment  | At Large   |
|---|---|---|---|--|--|---|---|--|
| <p>Coordinate state and federal data support and information</p> <p>Track areas of committees work to determine, services provided, numbers served and results</p> <p>Assist with coordinated intake processes to maintain related data</p> | <p>Determine household needs and assets</p> <p>Determine how household situation fits priorities established for assistance</p> <p>Determine unmet needs and link to available resources: child care; unemployment; SBA; insurance claims; legal assistance; rental assistance, etc</p> | <p>Maintaining lists of potential volunteers/ groups</p> <p>Linking volunteer groups to appropriate &amp; safe projects &amp; activities</p> <p>Maintaining records of volunteers time and activity</p> <p>Helping find shelter and food for groups</p> | <p>Determining needs of community for information regarding recovery</p> <p>Reaching special populations within the community for particular participation opportunities</p> <p>Providing &amp; coordinating information to the media</p> <p>Keeping a bank of stories, data and information to share</p> | <p>Gather unmet needs from various committees and determine what resources need to be developed</p> <p>Seek donations of funds, goods and services to meet needs</p> <p>Monitor and report on use of funds</p> | <p>Determine needs for housing from temporary to permanent</p> <p>Coordinate repair and rebuilding activities</p> <p>Manage building materials donated &amp; purchased</p> <p>Manage network of NGO's and general contractors in collaboration with volunteer management</p> | <p>Determine general well-being of those affected directly and the general community</p> <p>Organize outreach &amp; activities to provide support &amp; care</p> <p>Coordinate community activities</p> <p>Know &amp; use resources for behavioral health support</p> | <p>Determine overall impact of the tornado on the community</p> <p>Provide assessment of needs and assets to steering community for planning</p> <p>Analyze changes in needs and assets as the work in the community progresses</p> | <p>Assure coordination with other community public and private efforts</p> <p>Assist steering committee and subgroups to find resources</p> <p>Provide updates on changes in policy and practices that impact recovery efforts</p> |



## Phase Two Day 11 through November



**Phase Three**  
November 2018 and through the next two to four years



# Recovery Planning

Where does LTRG fit into the county's recovery plan?

# Recovery Planning Workshops were done in February, 2021

- We are in the infancy stages of recovery planning
- Working with the state to build a plan from the workshops
- Working with all partners
- LTRG will be included in most every part of the plan



# Recovery Support Function Workshop Sessions

- Infrastructure
- Natural and Cultural Resources
- Housing
- Health and Social Services
- Economic
- Basic Recovery Plan

# And then...

Derecho – All County involved disaster August 10, 2019

Covid-19 – All County involved pandemic/disaster beginning early 2020

# COAD Formation

- Why?
- How?
- Who?
- When?

